

HP E2456A

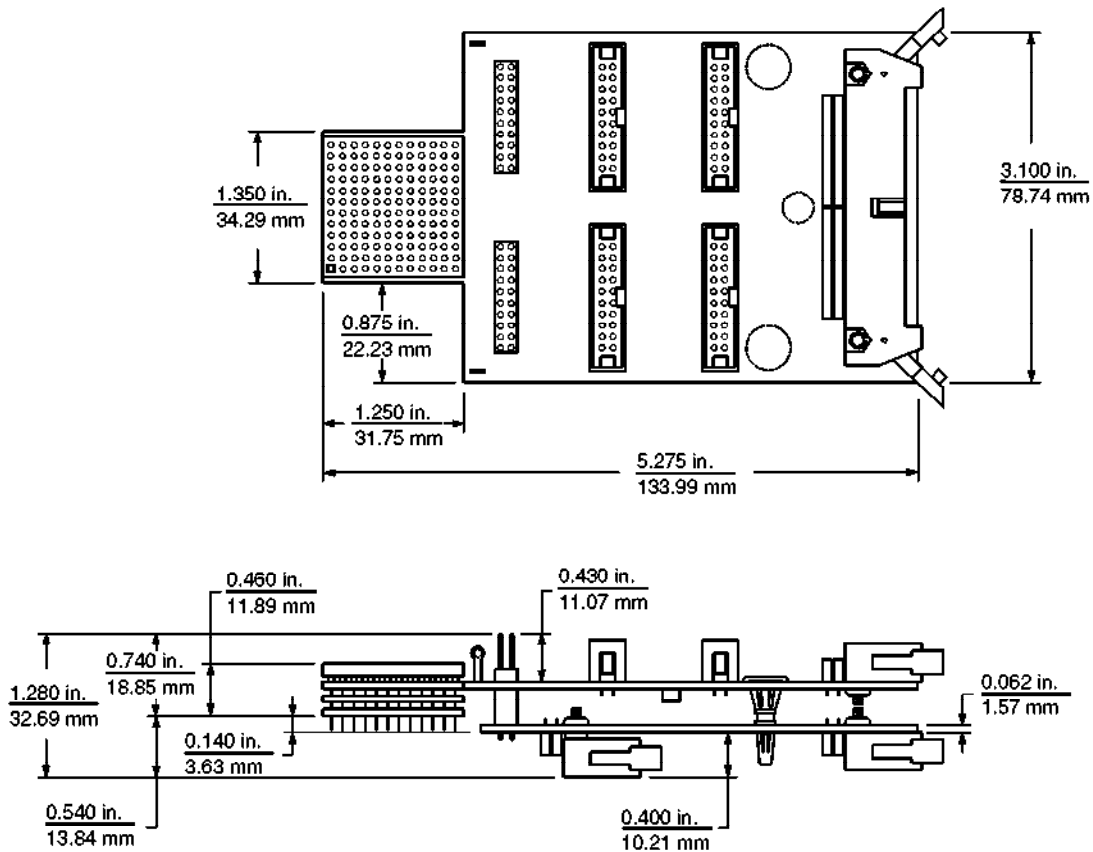
Motorola 68306 Preprocessor Interface

For use with
HP logic analyzers

The Hewlett-Packard E2456A preprocessor interface provides an easy way to connect a Hewlett-Packard logic analyzer to a target system using the Motorola 68306 microprocessor. All necessary clocks are passed through by the preprocessor to the logic analyzer, ensuring that

data is captured at the correct time. Software is shipped with the product that automatically configures the logic analyzer, generating labels for address, data, and status signals. Included with the software is a disassembler that displays execution traces in 68306

microprocessor mnemonics. Instructions that are pre-fetched, but not executed, are marked in the trace display.





Key Specifications

Timing Analysis support:

The preprocessor provides unbuffered timing analysis for all signals.

Parametric Measurements:

The preprocessor provides probing points to take parametric measurements.

Pods:

Each preprocessor has three connectors available for state analysis and six for timing analysis. For disassembly three logic analyzer pods must be used. All signals used in disassembly can be double probed for state and timing analysis. Seven pods would allow timing measurements of all processor signals.

Termination Adapters (TAs):

None are required for state analysis as the connectors are terminated on the preprocessor. For timing analysis one TA (part number 01650-63203) is required per pod.

Logic Analyzers Supported:

HP 1650B, 1652B, 1654B, 1660A, 1661A, 1662A, 16510B, 16511B, 16540 and 16541 (A & D models), 16542A, 16550A, 16555A

E2456A for the Motorola 68306 Microprocessor

Processors Supported:

68306 132-pin PQFP through 16.67 MHz.

Adapter Needed:

The 132-pin PGA-PQFP (E3417A) adapter is required for the HP E2456A to probe the 132-pin PQFP version of the 68306.

Signal Line Loading:

10 pF on EXTAL and XTAL. 20 pF in parallel with 100 k Ω on all other signals.

For more information, call your local HP sales office listed in your telephone directory, or an HP regional office listed below:

United States:

Hewlett-Packard Company
Test and Measurement Organization
5301 Stevens Creek Blvd.
Bldg. 51L-SC
Santa Clara, CA 95052-8059
1 800 452 4844

Canada:

Hewlett-Packard Canada Ltd.
5150 Spectrum Way
Mississauga, Ontario L4W 5G1
(416) 206-4725

Europe:

Hewlett-Packard
European Marketing Centre
P.O. Box 999
1180 AZ Amstelveen
The Netherlands
31 20 547 9858

Japan:

Yokogawa-Hewlett-Packard Ltd.
Measurement Assistance Center
9-1, Takakura-Cho, Hachioji-Shi,
Tokyo 192, Japan
(81) 426 48 0722

Latin America:

Hewlett-Packard
Latin American Region Headquarters
5200 Blue Lagoon Drive, 9th Floor
Miami, Florida 33126, U.S.A.
(305) 267 4245/4220

Australia/New Zealand:

Hewlett-Packard Australia Ltd.
31-41 Joseph Street
Blackburn, Victoria 3130
Australia
Melbourne Caller 272 2555
(008) 13 1347

Hewlett-Packard Asia Pacific Ltd.
17-21/F Shell Tower, Time Square
1 Matherson Street, Causeway Bay
Hong Kong
(852) 599 7070

Technical information in this document is subject to change without notice.

**Printed in U.S.A. 6/94
5963-1237E**